

Read Me First:

QlikView Enterprise Evaluation Download

Contents:

Contents:	1
About this Guide	1
About QlikView	2
About the Trial Version of QlikView Enterprise	2
Installation Options	2
Examples.....	3
Tutorial.....	4
Getting Started	5
QlikView Evaluation FAQs	5
1. I'm very excited about QlikView but I am too busy right now, is there assistance available to help me evaluate QlikView?.....	5
2. I am dying to get started with QlikView, is there some sort of tutorial available?.....	5
3. Do you have examples that demonstrate the various advanced features of QlikView?.....	6
4. My data volume is unbelievably huge; will I be able to use QlikView to analyze my data?.....	6
5. My data volume is unbelievably huge; how can I evaluate QlikView quickly and efficiently?...	6
6. When I pull my own data into QlikView, how does QlikView recognize relationships (joins) between my tables?.....	7
7. I am trying to run a load script against my own data but when the script runs it seems to hang or give an out of memory error, what is going on?	8
8. I'm loading a huge volume of data. My script takes several minutes to run. Is there any way I can load a limited set of data as I continue to tweak my script so that I don't have to wait while my script refreshes each time?.....	11
9. I have loaded my data and am adding charts and graphs into my QlikView document. One chart I've added does not display any data but instead gives the message 'Out of object memory'. What is happening and how can I fix it?	12
10. I have loaded my data and am adding charts and graphs into my QlikView document. One table or chart I've added does not display any data but instead gives the message 'Too many cells'. What is happening and how can I fix it?	12
11. I have the QlikView evaluation up and running against my own data and I like what I see. How can I learn more?	12
Thank You	12
Contact QlikTech	13
Europe.....	13
North America	14

About this Guide

This guide is designed to assist you to get the most out you valuable time by getting you up and running as fast as possible in your evaluation of QlikView.

The Installation Options section below walks you through the various supplementary materials that can be installed along with the evaluation version of QlikView. Particular attention is paid to the Tutorial installation.

The FAQ section below is designed to answer a number of common questions as well as provide helpful information in several key areas that could potentially act as stumbling blocks to someone creating their very first QlikView application.

About QlikView

QlikView simplifies analysis for everyone. QlikTech's patented technology allows instant, in memory, manipulation of massive datasets on low cost hardware, allowing affordable widespread deployment of sophisticated analytic applications in days. Organizations using QlikView can gain business value quickly as they develop, modify, deploy, and – most importantly – use business intelligence applications.

QlikTech is changing the game in data analysis, the new rules are:

- Fast time to value – customers are live in less than 30 days, and most in a week.
- Risk free – available as a fully-functional free trial download.
- Easy to use – end users require no training (Should we say developers need some training?)
- Flexible – unlimited dimensions and measures and can be modified in seconds.
- Integrated – fully integrated business analysis suite – power analysis, sophisticated applications, and simple reporting on a single architecture.
- Powerful – near instant response time on massive data volumes.

About the Trial Version of QlikView Enterprise

The evaluation version of QlikView Enterprise that you have downloaded is a full version of QlikView Enterprise. The installation includes the full reference manual located in the Documents sub-directory under the QlikView install directory.

The only limitation is that the evaluation license will only work for 15 distinct days of usage. This means that if you download and use the evaluation version on Monday but don't open QlikView again until Thursday, then you are still only on your second day of the evaluation period (one day for Monday and the second day for Thursday, Tuesday and Wednesday don't count as QlikView was not opened on those days).

Installation Options

By default, the installer only installs QlikView Enterprise and the documentation. By Choosing the "Custom" install option, you can install additional

supplementary materials as listed below. Of particular use are the Tutorial and Examples components. Of course, you can always choose to perform a complete install in which case all of the items listed below will be installed.

If your aim is to get familiar with QlikView as fast as possible and move on to evaluating QlikView against your own data, then you should definitely install the Tutorial component.

If you would like to see a variety of examples of features and techniques that can be applied to your own applications then you should definitely install the Examples component.

The other installation components (Custom Objects and Themes) are entirely optional and are not discussed below. Further information on these items can be found in the QlikView Reference manual.

Of course, you can always choose to perform a complete install in which case all of the items listed below will be installed.

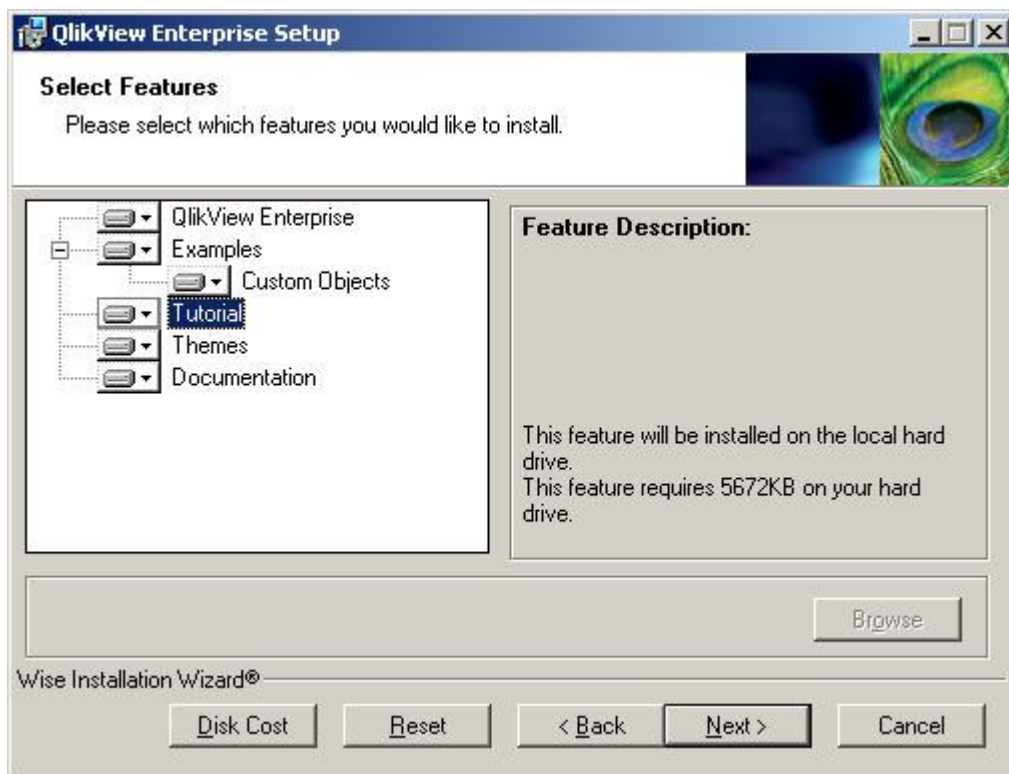


fig. 1: The custom install screen.

Examples

Size: 28 Megs – Recommended Install. The Examples will install numerous QlikView files demonstrating many of the advanced features of QlikView. These files offer an excellent overview of some of the QlikView functionality and layout options. They can also be used as a

reference to see exactly how different elements can be implemented and used in your own custom QlikView applications.

If you have already installed QlikView without the Examples component, simply run the installer again and you will be given the option of modifying your installation and can add the Examples component at that time.

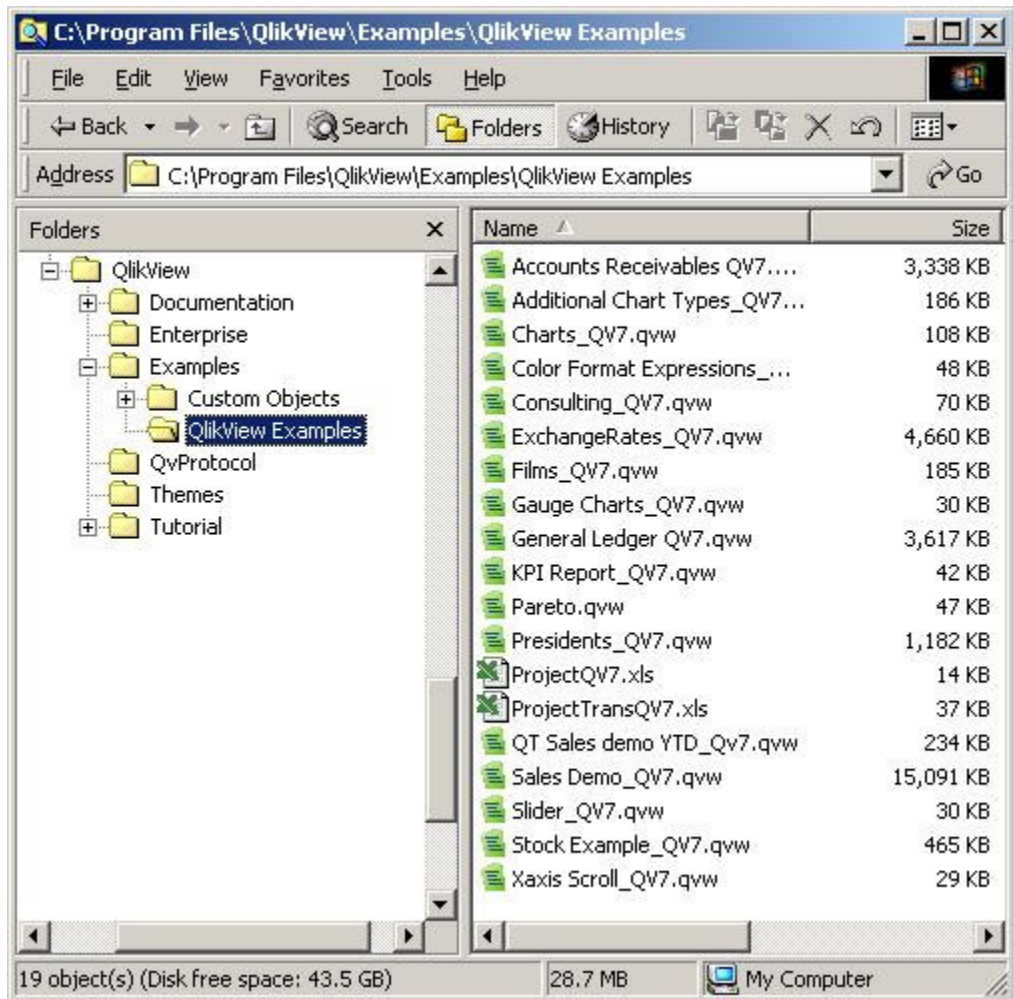


fig 2: Default location of files installed with Examples component.

Tutorial

The Tutorial is vital to getting up to speed using QlikView as fast as possible. Investing just a few hours in working through the Tutorial can pay big dividends when you decide to begin using QlikView to analyze your own data.

QlikView is in a league of its own when it comes ease of use. No other product on the market comes close. There are, however, a few fundamental concepts that must be understood to use QlikView

effectively. The Tutorial walks through this information. The FAQs below also answer some common questions.

If you have already installed QlikView without the Tutorial component, simply run the installer again and you are given the option of modifying your installation and can add the Tutorial component at that time.

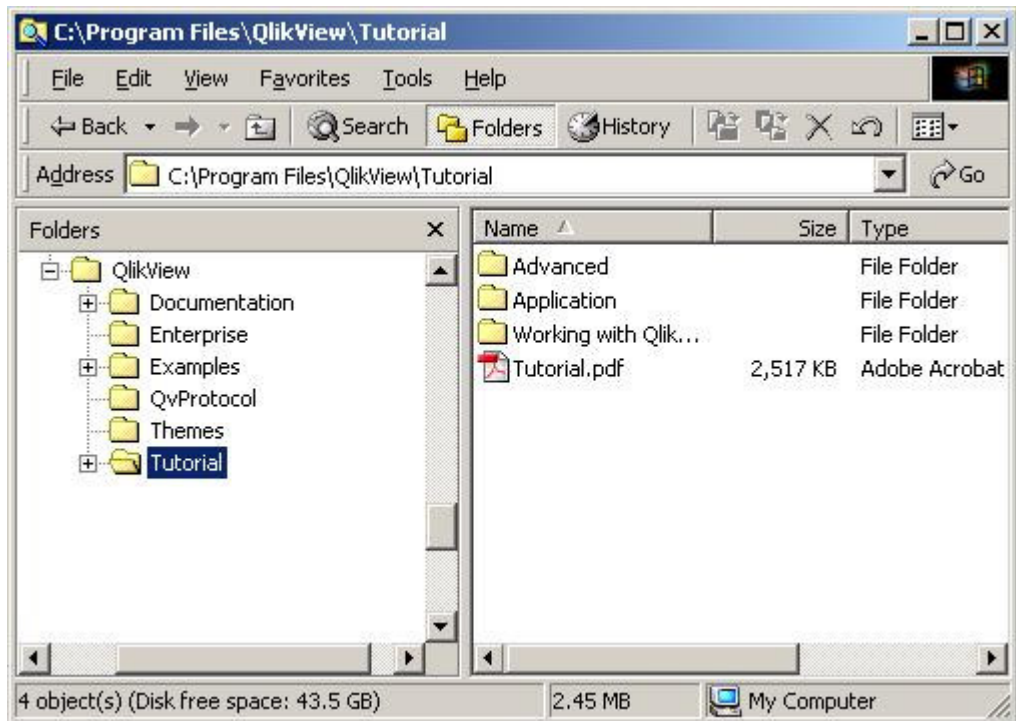


fig 3: Default location of files installed with Tutorial compone.

Getting Started

QlikView Evaluation FAQs

- 1. I'm very excited about QlikView but I am too busy right now, is there assistance available to help me evaluate QlikView?**

For assistance with QlikView evaluation please contact ABM sales support (see [Contact ABM](#) below).

- 2. I am dying to get started with QlikView, is there some sort of tutorial available?**

Yes there is, please see the Installation Options section above. If you have already installed QlikView without the Tutorial component, simply run the

installer again and you will be given the option of modifying your installation and can add the Tutorial component at that time.

3. Do you have examples that demonstrate the various advanced features of QlikView?

Yes we do, please see the Installation Options section above. If you have already installed QlikView without the Examples component, simply run the installer again and you will be given the option of modifying your installation and can add the Examples component at that time.

4. My data volume is unbelievably huge; will I be able to use QlikView to analyze my data?

Yes you can. Don't believe us? When the German Association of Compulsory Health Insurance Physicians (KBV – Kassenärztliche Bundesvereinigung) required a solution that could analyze terabytes of data they turned to QlikTech.

“Everything spoke clearly in favor of the project team at QlikTech: in the proof-of-concept we saw that this solution would allow us to quickly and easily analyze a data volume of even 15 to 20 terabytes across two billion records. There is simply no other supplier or system that could even come close to handling these large data volumes,” said Eva Obermeyer, head of the KBV Accounting Department, explaining the reason for their decision

For the full press release see:

<http://www.qliktech.com/ArticleDisplay.asp?id=1306>. For more information including an in-depth case study please contact ABM sales support (see [Contact ABM](#) below).

For more information on hardware requirements for massive datasets and evaluating QlikView please see question 5 below.

5. My data volume is unbelievably huge; how can I evaluate QlikView quickly and efficiently?

Analyzing truly massive datasets requires a robust hardware platform to support this analysis. In cases with extremely large data volumes our clients have chosen 64bit solutions. See the press release cited above for additional information on the hardware employed at KBV.

Regardless of the production hardware platform, the evaluation and development of these applications are typically performed on more modest hardware with limited datasets. Datasets can be limited by Year, Geography, Product, Business Unit or any other appropriate criteria.

The load testing and performance evaluation aspects of evaluating QlikView against truly massive datasets (terabyte and greater) typically require more planning. Please contact ABM sales support (see [contact ABM](#) below) at 61 (02) 8249-4351 for assistance with hardware evaluation and proof of concept planning for massive dataset projects.

6. When I pull my own data into QlikView, how does QlikView recognize relationships (joins) between my tables?

Join relationships between tables are handled quite elegantly in QlikView. Any fields with the same name form a key field and results in a join between the tables. Fields that do not have the same name do not create a join field. To control this behavior in QlikView all you need to do is alias field names in the script.

To join two fields that have different names, alias one or both fields so that they share the same name. This will form a join. In the example below a join is defined between the PRODUCT table and the INVOICE table on Prod_ID

```
Load
    ID as Prod_ID
    Product_Name,
    (etc...)
From
    PRODUCT;

Load
    Invoice_ID
    Product_ID as Prod_ID,
    Amount,
    (etc...)
From
    INVOICE;
```

To prevent a join from forming where two fields have the same name, alias one or both fields so that they have separate name. In the example below a join is prevented on the field Create_Date that occurs in both the PRODUCT table and the INVOICE table.

```
Load
    ID as Prod_ID
    Product_Name,
    Create_Date as Create_Date_Prod,
    (etc...)
From
    PRODUCT;

Load
    Invoice_ID
    Product_ID as Prod_ID,
```

```
Amount,  
Create_Date as Create_Date_Inv,  
(etc...)  
From  
INVOICE;
```

For additional information see Lesson 12 Associating Data from Many Tables in the tutorial manual (default location C:\Program Files\QlikView\Tutorial\Tutorial.pdf).

For more advanced options see the following script keywords in the reference manual (default location C:\Program Files\QlikView\Documentation\Reference Manual.pdf): **Alias** (pg. 233), **Load** (pg. 253), **Qualify** (pg. 267), **Rename Field** (pg. 269), and **Unqualify** (pg. 285).

See also question #7 below.

7. I am trying to run a load script against my own data but when the script runs it seems to hang or give an out of memory error, what is going on?

This typically indicates that you have loaded multiple tables that share the same field names across multiple fields. For example if you were to load the following four tables, QlikView could run into issues if huge amounts of data were being loaded.

```
Load  
Customer_ID,  
Customer_Name,  
Address1,  
Address2,  
Address3,  
City,  
State,  
Zip,  
Country,  
Create_Date,  
Createt_User,  
Update_Date,  
Update_User  
From  
CUSTOMER;
```

```
Load  
SalesRep_ID,  
SalesRep_Name,  
Address1,  
Address2,  
Address3,  
City,  
State,  
Zip,
```

```

Country,
Create_Date,
Createt_User,
Update_Date,
Update_User
From SALESREP;
Load
Distributor_ID,
Distributor_Name,
Address1,
Address2,
Address3,
City,
State,
Zip,
Country,
Create_Date,
Createt_User,
Update_Date,
Update_User
From
DISTRIBUTOR;

Load
Invoice_ID,
Customer_ID,
SalesRep_ID,
Distributor_ID,
Create_Date,
Createt_User,
Update_Date,
Update_User
From
Customer;

```

QlikView sometimes needs guidance so that it will not attempt to create all of these key fields on fields that are not actually used to form joins. The only legitimate joins in the tables above are on Customer_ID (between the CUSTOMER table and the INVOICE table), SalesRep_ID (between the SALESREP table and the INVOICE table), and Distributor_ID (between the CUSTOMER table and the DISTRIBUTOR table). All other joins must be broken by making the field name different.

One quick and easy way to accomplish this is to use the **Qualify** and **Unqualify** keywords. Qualify will cause a field to be named *TableName.FieldName* when it is loaded into QlikView. This can be used to cause the **Address1** field to load with different field names (**CUSTOMER.Address1**, **SALESREP.Address1**, and **DISTRIBUTOR.Address1**).

The following code will load the four tables into QlikView correctly:

```
Qualify *;
```

```
UnQualify Customer_ID;
```

```
Load
```

```
Customer_ID,  
Customer_Name,  
Address1,  
Address2,  
Address3,  
City,  
State,  
Zip,  
Country,  
Create_Date,  
Createt_User,  
Update_Date,  
Update_User
```

```
From
```

```
CUSTOMER;
```

```
UnQualify SalesRep_ID;
```

```
Load
```

```
SalesRep_ID,  
SalesRep_Name,  
Address1,  
Address2,  
Address3,  
City,  
State,  
Zip,  
Country,  
Create_Date,  
Createt_User,  
Update_Date,  
Update_User
```

```
From
```

```
SALESREP;
```

```
UnQualify Distributor_ID;
```

```
Load
```

```
Distributor_ID,  
Distributor_Name,  
Address1,  
Address2,  
Address3,  
City,  
State,  
Zip,  
Country,  
Create_Date,  
Createt_User,  
Update_Date,  
Update_User
```

```

From
    DISTRIBUTOR;

Load
    Invoice_ID,
    Customer_ID,
    SalesRep_ID,
    Distributor_ID,
    Create_Date,
    Createt_User,
    Update_Date,
    Update_User

From
    Customer;

```

For more advanced options see the following script keywords in the reference manual (default location C:\Program Files\QlikView\Documentation\Reference Manual.pdf): **Alias** (pg. 233), **Load** (pg. 253), **Qualify** (pg. 267), **Rename Field** (pg. 269), and **Unqualify** (pg. 285).

Another good use of the qualify statement is to avoid data joins altogether during the data discovery stage of development. If you are not sure how data links together, simply place `Qualify *`; as the first statement prior to any LOAD or SQL select statements. This will allow you to load all of your data with no joins in the beginning. Then you can use QlikView to explore your data and add back in the joins one by one (by adding the appropriate unqualify statements where needed and rerunning the script) as you become more familiar with the relationships between your tables.

8. I'm loading a huge volume of data. My script takes several minutes to run. Is there any way I can load a limited set of data as I continue to tweak my script so that I don't have to wait while my script refreshes each time?

Yes. Within the QlikView script editor there is a Debug button on the toolbar (or you can use File | Debug). This will bring up the QlikView debugger. The debugger provides numerous powerful features. For more information on all the features of the debugger please see page 226 of the QlikView reference manual.

In order to load a limited dataset select the "Limited Load" checkbox in the debugger and select the number of records you wish to load. Select the "Run" button in the debugger to reload your script with the limited dataset. When the script has finished running simply select the "Close" button on the bottom left of the debugger.

This method is very useful to verify that your script syntax is correct and all you data loads as expected. Be careful not to try to analyze your data after

doing a partial reload because the sampling of records you read in with the limited load will not be representative of your full data set.

After you have verified your script is free of errors you can then execute a full reload (outside of the debugger) and analyze your full dataset.

9. I have loaded my data and am adding charts and graphs into my QlikView document. One chart I've added does not display any data but instead gives the message 'Out of object memory'. What is happening and how can I fix it?

By default every QlikView object has a preset limit of memory that it can use. When the object tries to display data that takes up more memory than the default it will give the 'Out of object memory' message.

To fix this, simply right-click on the object and choose 'Properties'. Select the 'General' tab and push the 'Memory' button at the bottom of the tab. Select the 'Automatic' checkbox. Your chart should now display correctly.

10. I have loaded my data and am adding charts and graphs into my QlikView document. One table or chart I've added does not display any data but instead gives the message 'Too many cells'. What is happening and how can I fix it?

By default every QlikView table object has a preset limit on the number of cells that it can display. When the object tries to display more cells than the limit it will give the 'Too many cells' message.

To fix this, simply right-click on the object and choose 'Properties'. Select the 'General' tab and push the 'Memory' button at the bottom of the tab. Increase the number in the 'Maximum Number of Cells' box until your table displays correctly. Be sure to clear all selections to verify that the maximum number of cells you have defined will work for the largest data set your users could possibly view.

11. I have the QlikView evaluation up and running against my own data and I like what I see. How can I learn more?

For more information, please contact ABM sales support (see [Contact ABM](#) below).

Thank You

Thank you for downloading QlikTech Inc.'s free 15 day trial of QlikView Enterprise and for taking the time to evaluate QlikView. We are positive you will find QlikView to be the most powerful, most user friendly and most cost effective analytical tool available. QlikView's power, ease of use, and short deployment time represent a revolution in the business intelligence industry. Please don't hesitate to allow us to assist you with your evaluation.

Contact ABM Systems 61 (2) 8249-4351

Europe

Sweden

Corporate and Swedish Headquarters

Lund, Sweden

QlikTech International AB

Science Park Ideon

223 70 Lund, Sweden

Visit: Science Park Ideon

Beta 6, Schéelevägen 17, Lund

Phone: +46 (0)46 286 27 00

Fax: +46 (0)46 286 26 61

info@qliktech.com

jobb@qliktech.com

Sales Office

Stockholm, Sweden

QlikTech International AB

Box 41, 171 11 Solna, Sweden

Phone: +46 (0)46 286 52 75

Fax: +46 (0)8 611 95 01

info@qliktech.com

Besöksadress: Solna Business Park,

Englundavägen 7, Solna

Gothenburg, Sweden

QlikTech International AB

Aminogatan 34, 431 53 Mölndal, Sverige

Tel: +46 (0)46 286 27 00

Fax: +46 (0)31 27 92 00

The Netherlands

Sales Office

A branch of Qliktech Deutschland GmbH

Stephensonstraat 19

1097 BA Amsterdam

Phone: +31 (0) 20 750 7530

Fax: +31 (0) 20 750 7301

infonl@qliktech.com

UK

UK Headquarters

Warwickshire, UK

Villiers House

Clarendon Avenue

Leamington Spa, Warwickshire

United Kingdom, CV32 5PR

Phone: +44 (0) 1926 45 88 88

Fax: +44 (0) 1926 45 88 89

ukinfo@qliktech.com

Spain

QlikView Business Center

Madrid, Spain

QlikView Spain

Reina Mercedes, 5-7 posterior

28020 Madrid, España

Phone: +34 902 300 144

Fax: +34 915 350 889

info@qlikviewspain.com

Denmark

Show room

Köpenhamn, Danmark
QlikTech International AB
Artillerivej 90
DK-2300 Copenhagen S
Denmark
Phone: + 45 (0)70 20 63 11

Germany

German Headquarters

Düsseldorf, Germany
QlikTech Deutschland GmbH
Rather Straße 49d
D-40476 Düsseldorf
Phone: +49 (0) 211 58 66 80
Fax: +49 (0) 211 58 668 559
infode@qliktech.com

North America

United States

North American Headquarters

Raleigh, North Carolina
QlikTech Inc.
5400 Trinity Road, Suite 107
Raleigh, NC 27607
Phone: +1 (888) 828-9768
Fax: +1 (919) 532-1301
infous@qliktech.com

For employment opportunities in North America please contact opportunities@qliktechinc.com

Northeast Region Sales Office

New York, New York
QlikTech Inc.
424 West 33rd St, Suite 210
New York, NY 10001
Phone: +1 (212) 966-4508
Fax: +1 (212) 226-5504
infous@qliktech.com

Midwest Region Sales Office

Minneapolis, Minnesota
QlikTech Inc.
7760 France Avenue South
Bloomington, MN 55435
Phone: +1 (952) 886-7147
Fax: +1 (952) 400-5649
infous@qliktech.com